



Kelvin Grove State College

The Pursuit of Excellence With All Our Might
Your "Prep to Pathways" Experience

Homestay Providers' Newsletter Term 4 2025

Dear KGSC Homestay Host,

Term 4 2025 is quickly drawing to a close and will finish this Friday December 12. We have now farewelled our senior students as they start their new adventures and further studies.



The Global Engagement & International Programs Department recently hosted a two-week study tour group of 28 students from Keishin Junior High School, from Tokyo.

The students were able to attend classes and activities at KGSC, stay with an Aussie family and experience our wonderful Brisbane lifestyle.



Please know that we are always very appreciative of you - our valued KGSC Homestay hosts.

**We wish you all a very safe and
happy Christmas and New Year's
and look forward to working with you again in 2026.**

Dhuha, Sue, Carolina and Jasmin

Christmas edition



Term 4 ends	Friday 12 December
Christmas Day	Thursday 25 December
Boxing Day	Friday 26 December
New Years day	Thursday 1 January
SUB Shop back to school opening hours	SUB Shop uniforms
Australia Day Public holiday	Monday 26 January
Term 1 2026	Tuesday 27 January Back to school



Student belongings Engraving service

Senior Constable Meriel Ianna is the KGSC School Based Police Officer at KGSC.

S.C Mariel offers a free engraving service to all students to have their electronic devices engraved with their names and/or contact number. Suitable items include laptops and mobile phones. She is located in the Student Wellbeing Centre, and is available Mondays, Tuesdays, Thursdays and Fridays during school hours.

Students can attend her office during breaks.

Homestay Providers Terms and conditions

EQI (Education Queensland International) has recently updated the Homestay Providers Terms and conditions.

These new T's and C's are also included in an updated Homestay Providers Application form and the topic of Homestay Insurance is raised.

We recommend you review to see if this is appropriate for you.

International student free healthcare service

All international students are required to hold Overseas Student Health Cover while they study on Australia. The OSHC process (like Medicare) is their go-to for any medical issues, but we have recently been advised about a free clinic that is operated by Metro North Health and located in Brisbane City:

The **Brisbane City Nurse-Led Walk-In Clinic** offers **completely free healthcare services**

- the only clinic of its kind in the Brisbane CBD. They provide **free flu vaccinations** for people aged **5 and over**. This walk-in service requires **no Medicare card, no referral, no appointment, and no payment**. Just walk in during opening hours.

Key Patient Benefits:

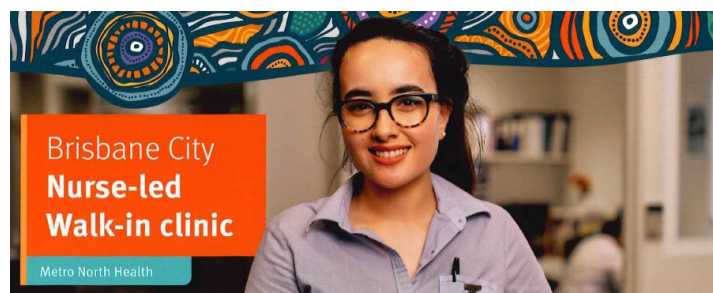
- **100% Free Healthcare:** No cost for consultations or treatments.
- **Open to Everyone:** No Medicare card needed—**Free for everyone** – including refugees, backpackers, international visitors, **students, and all visa holders**.
- **Central CBD Location:** Easily accessible in the heart of Brisbane.
- **No Bookings Required:** Simply walk in, no need to call ahead.

For more information, visit [Metro North walk in clinic](#)

📍 **Location:** 316 Adelaide Street, Brisbane

📞 **Phone:** 1800 960 127

🕒 **Hours:** Monday to Friday, 8:30 AM – 6:00 PM



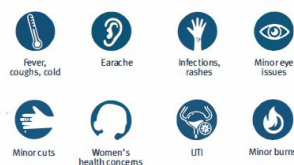
The nurse-led walk-in clinic can be accessed for walk-in, urgent treatment of conditions not anticipated to be life-threatening. The service is free for Medicare and non-Medicare Card holders.

The nurse-led walk-in clinic is not an emergency department. The safest and fastest way to access help in an emergency is to call 000.

Should I go to the nurse-led walk-in clinic or the Emergency Department?

Nurse-led walk-in clinic

Examples of non-life-threatening conditions



Emergency Department / 000

Examples of medical emergencies



Address: 316 Adelaide Street, Brisbane Qld 4000
Hours: 8:00am to 10:00pm 7 days a week
Walk-in, no booking or referral is needed.



Scan the QR to find the options for care when it is urgent but not an emergency.

metronorth.health.qld.gov.au/community/locations/brisbane-city-walk-in-clinic

Queensland Government





EQI & Surf Life Saving Queensland Water Skills Assessment

All International Homestay students need to hold a Water Skills Assessment Certificate if they want to take part in any water activity while they're here.

EQI, in association with Surf Life Saving Queensland (SLSQ,) will be holding free water skills assessments at Southbank Parklands in late January and again in February.

Full information and how to register details will be sent to all students (*and to you*) in the first week of term 1.

** If your student has already done an assessment session, they don't have to do it again.*



The 2026 EQI Holiday Adventure Program will be back in 2026 and available to all International Homestay students.

Travel will be during the term breaks and typical destinations include:

- Outback Safari 1 and 2
- K'gari (formerly Fraser Island) Safari
- Northern Safari - Central Australia to Kakadu
- Sydney Tour
- Cairns Tour

2025 saw many students apply for these trips which booked out quickly.

The full Itinerary for next year will be distributed to both students and hosts as soon as dates are finalized early Term 1 2026.



YOUR HOMESTAY FEE PAYMENTS DURING THE CHRISTMAS HOLIDAYS

- If your student is staying in Australia, you'll receive full Homestay fees in advance, to cover school closure. This will be paid to you by Monday 08.12.25.
- If your student is travelling or going home for the holidays and are leaving their belongings with you, you'll receive holding fees of \$58 p/w per student.

All payments are based on the dates and information the students have provided on their travel forms. KGSC uploads these details to OneSchool which allows 1800QSTUDY to access information in case of an emergency.

The final pay run will be during the last week of term 4 and dated 07.12.25 to 24.01.26.

- **If you have a new student coming in Term 1**, their fees are released to KGSC in the first week of school, so will be in the first 2026 pay run.
Your payments will be back dated to when they arrived.

Students who are staying in Brisbane will be reminded to plan ahead for any travel or sleepovers during the holidays and to submit their travel forms before 11.12.25.

*Sometimes travel activities can't be forecast, so for approval of any travel activity during the December / January term break, students can call **1800QSTUDY** for permission.*

**** Please let us know if you ever need to update your host fee account details. We recommend you allow one week for the change to be processed (and before closing the old account), in time for the next pay run.*

As always, 1800QSTUDY, the support service for Homestay Hosts and international students - will be available during the term break to ensure you have consistent access to support and assistance for any concerns.

This service is available 24 hours a day, seven days a week during the holidays.

1800QSTUDY
International students hotline | 1800 778 839



STUDENT CURFEWS

Education Queensland International have curfew guidelines in place for International students who are staying with a homestay host.

You can use these as a 'guideline' or a 'rule' where necessary:

Sunday to Thursday

Junior High School - no later than 6:00pm, (unless for a school-approved activity)

Senior High School - no later than 7:00pm, (unless for a school-approved activity)

Friday / Saturday and school holidays

Junior High School - no later than 9:30pm, (unless for a school-approved)

Senior High School - no later than 10:30pm, (unless for a school-approved activity)

If a student consistently fails to meet these, and your expectations, they may be required to undergo the process for dealing with unsatisfactory behaviour.

If you are experiencing a problem with your student, please remind them these guidelines are for their safety and contact your International team to discuss further.

We are always looking for new host families to welcome into the
KQSC Homestay program.

If you know anyone who may be interested, please free to pass on our
details to them.

Dhruha Gatei

HOD Global Engagement & International Programs

Ph: 07 3552 7328 | E: dgate9@eq.edu.au

Carolina Arniaz

International Student Coordinator E:

carna4@eq.edu.au

Sue Rainbow

International Student Homestay Coordinator

E: srain0@eq.edu.au | M: 0478 328786

Monday to Thursday

