

DRESS CODE

Junior, Middle & Senior School

V1 2026



Kelvin Grove State College

The Pursuit of Excellence With All Our Might

Table of Contents

1	Purpose	3
2	College Uniform	3
2.1	Uniform Procedure	3
2.2	Sports & Sports Excellence Uniform	3
2.3	Broad Brimmed Hats, Bucket Hats and Caps	4
2.4	Ties	4
2.5	Shoes	4
2.6	Hair & Facial Hair	5
2.7	Jewellery	5
2.8	Makeup and Nail Polish	5
3	Awareness Days	5
4	Non-compliance with the Dress Code	6
5	Junior School Uniform	7
5.1	Uniform Items	7
5.2	Junior School Uniform Examples	8
6	Middle School Formal Uniform	9
6.1	Uniform Items	9
6.2	Middle School Uniform Examples	10
7	Senior School Formal Uniform	11
7.1	Uniform Items	11
7.2	Senior School Uniform	12
8	Middle and Senior School Sports & Sports Excellence Uniform	13
8.1	Uniform Items	13
8.2	Middle & Senior School Sports Uniform Examples	14

1 Purpose

Kelvin Grove State College prides itself on high expectations. We view the manner in which students present themselves as an extension of the attitude to learning and growth, and we are committed to guiding students toward becoming globally competent learners, leaders and citizens. The Kelvin Grove State College P & C Association has established an appropriate uniform which is to be worn correctly every day. Students attending Kelvin Grove State College are required to maintain the highest standard of dress and grooming.

2 College Uniform

For reasons of uniformity, all clothing items (with the exception of shoes, white socks, black belt, cultural headwear and the specified style of stockings/tights and long-sleeved undershirts) need to be purchased from our College's SUBShop. Clothing is to be worn as supplied by the SUBShop. The Middle School (Years 6–9) and Senior School (Years 10–12) uniforms share the same base components, with differentiation achieved through accessories and the manner in which items are worn.

2.1 Uniform Procedure

For **Junior School** students:

- College uniform must be worn daily, and to and from school.
- An email from a parent/carer addressed to the classroom teacher and sent to js.absence@kelvingrovesc.eq.edu.au is needed any time a student is unable to follow the Dress Code.
- Please ensure that all items of clothing (and other personal school equipment) are clearly marked with your child's name.

For **Middle and Senior School** students:

- College uniform must be worn daily, and to and from school.
- An email from a parent/carer addressed to the relevant Head of Year (HOY) and sent to ms.absence@kelvingrovesc.eq.edu.au is needed any time a student is unable to follow the Dress Code.
- Where possible, students will be supported to borrow a uniform item for the day, otherwise, students will receive a uniform slip which is to be carried with them during that day.
- Students who present at school without correct uniform and do not have an email from a parent/carer may be issued with a break time detention.

2.2 Sports & Sports Excellence Uniform

For **Junior School** students:

- On Wednesdays, as well as during Sports Days and House Cup activities, students are permitted to wear the House Polo Shirt. Please note that this is an optional uniform item for families.
- Sports Excellence uniforms (excluding the training uniform) can only be worn on the day that the program is held.
- Sports Excellence jackets are only worn at tournaments or for training. They are not to be worn with the Junior School uniform.

For **Middle and Senior School** students:

- Sports or Sports Excellence uniform must be worn for all HPE or Sports lessons.
- Sports Excellence students are exempt from purchasing the standard Sports uniform items, as the Excellence uniform fulfills this requirement.
- Sports or Sports Excellence uniform may be worn to and from school on the following days:
 - Wednesday for all Middle School students.

- On scheduled Health and Physical Education practical lesson days, for Middle School students.
- To and from athletics/swimming carnival days or representative sporting events
- In Senior School, Sports Excellence uniform may only be worn to or from the College when:
 - An early training session commences before 8.00am.
 - An afternoon training session finishes after 4.00pm.
- Outside of these specific times, all students are expected to change into their Formal uniform.
- Senior School students must change into their Sports or Sports Excellence uniform during the break before the scheduled HPE or Sports Excellence lesson, and back into their Formal uniform during the break after the class.
- Sports Excellence caps may be worn at any time during physical activity or when outside.
- Sports Excellence jackets are permitted to be worn with Formal College uniform.

If a Senior School student has a Sports Excellence lesson in Period 1 and a practical HPE lesson in either Period 2 or 3, they may remain in their Sports Excellence uniform. However, they must change back into their Formal uniform for Period 4 – even when there is after-school training.

2.3 Broad Brimmed Hats, Bucket Hats and Caps

For **Junior School** students:

- The College red broad brimmed hat is only to be worn by students in Prep.
- Wearing a College bucket hat is compulsory for Years 1-5 students, when attending PE lessons, outdoor activities, and at all break times.

For **Middle and Senior School** students:

- Wearing a College bucket hat, or Sports Excellence cap is compulsory for Years 6 and 7 students, when attending HPE and Sport, and at all break times.
- Students in Years 8-12 must wear a College bucket hat or cap, or Sports Excellence cap when attending HPE and sport and when on the Oval.
- Students in Years 8-12 are encouraged to wear a College bucket hat or cap, or Sports Excellence cap for all outdoor activities.

2.4 Ties (Middle and Senior School only)

- For students in **Middle School** wearing the tie with the Formal uniform is optional.
- All students in **Senior School** must wear a tie with the Formal uniform.
- Ties must be neatly tied with only College approved pins/badges to be affixed to it.

2.5 Shoes

For **Junior School** students:

- Plain black polishable closed-in lace-up/velcro school shoes or black joggers are the only shoes to be worn with the uniform. Coloured or white-accented shoes are not to be worn.

For **Middle and Senior School** students:

- Plain black polishable lace-up school shoes with a maximum 3cm heel height are the only acceptable shoes to be worn with the Formal uniform.
- Shoes for HPE/Sport must be athletic running shoes. These can be of any colour.

2.6 Hair & Facial Hair

- Hair shoulder length or longer must be tied back for workplace health and safety reasons.
- Hair must be neat and tidy.
- Students must be clean-shaven, unless wearing a short, neatly trimmed beard/moustache.
- The following are considered unacceptable:
 - Unnaturally coloured hair, including facial hair; for example: blue, green, bright orange/red, purple etc.
 - Hair styled in spikes or Mohawk style.
 - Hair, including facial hair, that is shaved in unusual patterns.

2.7 Jewellery

Principal approval is required for students to wear visible jewellery that has religious or cultural significance.

For **Junior School** students:

- The following are acceptable for students to wear, but not recommended:
 - One wrist watch.
 - One sleeper or stud per ear (small, inconspicuous gold or silver only).

For **Middle and Senior School** students:

- The following are acceptable for students to wear:
 - One wrist watch.
 - Two sleepers or studs per ear (inconspicuous gold or silver only).
 - One small plain finger ring.
 - Inconspicuous nose stud (not ring).
 - Necklace of sufficient length that it can be tucked inside a shirt or blouse and not visible.

2.8 Make-up and Nail Polish

For **Junior School** students:

- Make-up and nail polish are not to be worn.

For **Middle and Senior School** students:

- Make-up, including eyelashes and nail polish, must be natural and discreet in appearance, i.e.:
 - Natural-tone foundation.
 - Subtle black or brown mascara (no fake eyelashes).
 - Clear or neutral nail polish.

3 Awareness Days

Awareness Days are organised by the Student Representative Council (SRC) to promote awareness of a particular issue or initiative. Monies collected are used by the SRC to support a range of projects. With the donation of a “gold” coin, the students of Kelvin Grove State College may come to school wearing a specified accessory or item of clothing.

- Students must wear their full school uniform as specified by this Dress Code, the exception being the accessory or item of clothing nominated by the SRC for the Awareness Day.

- Clothing must be sun-safe (i.e. sleeved – no singlets or shoe-string style straps).
- Clothes are to be neat and tidy.
- Garments with inappropriate print/slogans are not permitted.
- Immodest clothing (e.g. bare mid-riffs, low-cut clothing) and sleepwear/pyjamas are not permitted.
- No open shoes are allowed (e.g. sandals, thongs) for workplace health and safety reasons.
- On the day, SRC members/teachers will collect the gold coin from each student who is participating
- Students who have chosen to not wear the accessory/item may still donate money if they wish.

For **Junior School** students:

- Students dressed inappropriately are referred immediately to the Deputy Principal.

For **Middle and Senior School** students:

- Students dressed inappropriately are referred immediately to the Head of Year or Deputy Principal.

4 Non-Compliance With the Dress Code

Based on the Education – General Provisions Act 2006

For **Junior School** students:

- All teachers are expected to speak to students in incorrect uniform, ask for a note from the parent/carer, and reinforce our uniform policy:
 - They may ask students to change into appropriate uniform (when students have the appropriate uniform with them)
 - They may ask students to remove jewellery, non-school coats/jumpers/outerwear or other non-uniform items and hand those items in.
- If a student is not in correct uniform where possible they will be provided with a correct uniform to borrow.
- Students may have exceptional or mitigating circumstances that need consideration. In an instance like this, they can discuss this with their classroom teacher, Deputy Principal or Guidance Officer, who may then contact home.

For **Middle and Senior School** students:

- All teachers are expected to speak to students in incorrect uniform, ask for uniform slip, and reinforce our uniform policy:
 - They may ask students to change into appropriate uniform (when students have the appropriate uniform with them)
 - They may ask students to remove jewellery, non-school coats/jumpers/outerwear or other non-uniform items and hand those items into the HOY Hub. A receipt will be given for jewellery and other items.
- If a student is not in correct uniform (i.e. not complying with the Dress Code), but follows all the processes correctly by having an email from their parent/carer, they will be provided with a uniform item to borrow or be issued with a uniform slip. They have appropriately followed the Dress Code.
- Students who do not follow the Dress Code Process are referred to the HOY and a consequence that aligns with the School Code of Conduct and the Education General Provisions Act (2006) may be applied.
- Students may have exceptional or mitigating circumstances that need consideration. In an instance like this, they can discuss this with their Head of Year, Deputy Principal or Guidance Officer, who may then contact home.

5 Junior School Uniform

5.1 Uniform Items

Item	Description	How to Wear
Tops		
Polo Shirt (Short or Long-sleeved)	Green polo shirt with College emblem embroidered on front.	May have all buttons done up or top button undone.
House Polo Shirt (optional)	Sublimated polo shirt in house colour with College emblem.	May have all buttons done up or top button undone. Colour to align with student's house. Refer to page 5 for details on when to wear.
Long-sleeved Under Shirt	Skin toned, white or black long-sleeved under shirt.	Full school uniform to be worn over top.
Bottoms		
Skort	Black skort with KG emblem embroidered at bottom.	Hem to sit at the top of the knee. Worn on the waist. Polo shirt to be worn tucked in.
Shorts	Black shorts with KG emblem embroidered at bottom.	Hem to sit at the top of the knee. Worn with belt. Polo shirt can be worn out or tucked in.
Trackpants	Plain black trackpants.	Hem to sit at or just below ankle. Polo shirt can be worn out or tucked in.
Socks & Footwear		
White Socks	Short white socks (ankle to crew length). Plain or KGSC branded.	Socks must be visible above the shoe.
Stockings/Tights	Skin toned or black stockings/tights.	To be plain and in good condition. Worn under skort.
Shoes	Plain black polishable closed in shoes or plain black jogggers.	To be in good order and polished. No colour other than black to be visible.
Outerwear		
Jacket	Zip-up, red polar fleece jacket with pockets and College emblem on front.	To remain in good condition.
Accessories		
Bucket Hat (Year 1-5)	Reversible green bucket hat with house colours. College emblem embroidered on front.	Emblem to face student's centre front. Brim is turned down and sits 1cm above the eyebrow. Colour to align with student's house.
Red Broad Brimmed Hat (Prep only)	Red, broad brimmed hat with adjustable chinstrap. KG emblem embroidered on front.	Emblem to face student's centre front. Brim is turned down and sits 1cm above the eyebrow.
Hair Ribbon (optional)	School or house colours only.	Worn over neutral coloured hair ties.
Cultural Head Covering	Plain black, white, or skin toned material.	Worn in accordance with cultural practices.

5.2 Junior School Uniform Examples



Short Sleeve Polo Shirt & Shorts



Short Sleeve Polo Shirt & Skort



Short or Long Sleeve Polo Shirt & Trackpants



Bowen House Polo & Shorts



Herbert House Polo & Shorts



Lutwyche House Polo & Shorts



Petrie House Polo & Shorts



Jacket Short or Long Sleeve Polo & Shorts



Jacket Short or Long Sleeve Polo & Skort

6 Middle School Uniform

6.1 Uniform Items

Item	Description	How to Wear
Tops		
Blouse (White or Grey)	Short sleeved, buttoned-down front with KGSC embroidery on pocket.	All buttons done up. Blouse is worn untucked.
Shirt (White or Grey)	Short sleeved, buttoned-down front with KGSC embroidery on pocket.	All except top button done up. Shirt must be tucked.
Long-sleeved Under Shirt	Skin toned, white or black long-sleeved under shirt.	Full school uniform to be worn over top.
Bottoms		
Skirt	Green pleated skirt.	Hem to sit at the top of the knee. Worn on the waist.
Shorts	Formal grey shorts.	Hem to sit at the top of the knee. Worn with belt.
Trousers	Formal grey trousers.	Hem to sit at or just below ankle. Worn with belt.
Socks & Footwear		
White Socks	Short white socks (ankle to crew length). Plain or KGSC branded.	To be worn with skirt. Socks must be visible above the shoe.
Grey Socks (Crew or Long)	Grey, striped with green and red at top.	To be worn with shorts and trousers. Long socks are appropriately turned over and self-supporting.
Stockings/Tights	Skin toned or black stockings/tights.	To be plain and in good condition. Worn under skirt.
Shoes	Polishable, full black, lace up shoes of plain design.	To be in good order and polished. Worn with Formal uniform only.
Outerwear		
Jumper	V-neck green knit jumper with College emblem on front.	Worn with Formal and Sports uniforms.
Jacket	Zip-up dark green jacket, two pockets and College emblem on front.	To remain in good condition. Worn with Formal and Sports uniforms.
Accessories		
Tie (optional)	Green and red striped tie.	Knot positioned over top button.
Belt	Black non-woven belt with plain buckle.	Worn with shorts and trousers.
Bucket Hat (compulsory Year 6-7, optional Year 8-9)	Reversible green bucket hat with house colours. College emblem embroidered on front.	Worn with Formal and Sports uniforms. Colour to align with student's house.
Cap (Year 8+ only)	Green cap with College emblem embroidered on front.	Worn with Formal and Sports uniforms.
Scarf	Black knitted scarf with KGSC at the bottom.	Worn with Formal and Sports uniforms.
Hair Ribbon (optional)	School or house colours only.	Worn over neutral coloured hair ties.
Cultural Head Covering	Plain black, white, or skin toned material.	Worn in accordance with cultural practices.

Middle School students have the option to wear the Senior School Formal Uniform. For further details on the Senior School Formal Uniform, refer to page 11.

6.2 Middle School Uniform Examples



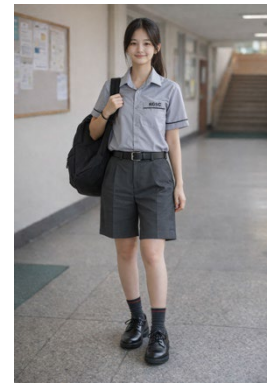
White Blouse & Shorts



Grey Blouse & Shorts



White Shirt & Shorts



Grey Shirt & Shorts



White Blouse & Skirt



Grey Blouse & Skirt



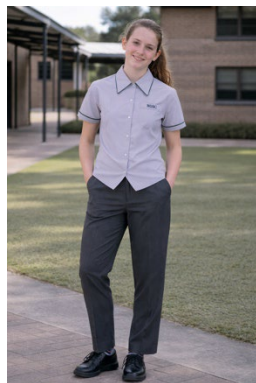
White Shirt & Skirt



Grey Shirt & Skirt



White Blouse & Trousers



Grey Blouse & Trousers



White Shirt & Trousers



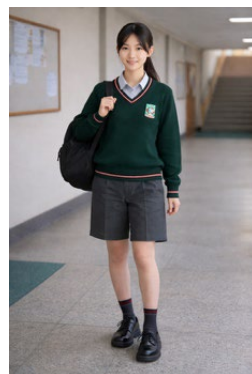
Grey Shirt & Trousers



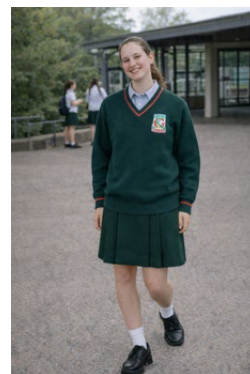
Jacket & Shorts



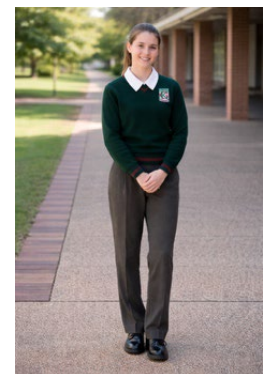
Jacket & Skirt



Jumper & Shorts



Jumper & Skirt



Jumper & Trousers

7 Senior School Uniform

7.1 Uniform Items

Item	Description	How to Wear
Tops		
Blouse (White or Grey)	Short sleeved, buttoned-down front with KGSC embroidery on pocket.	All buttons done up. Blouse is worn untucked. Worn with tie.
Shirt (White or Grey)	Short sleeved, buttoned-down front with KGSC embroidery on pocket.	All except top button done up. Shirt must be tucked. Worn with tie.
Long-sleeved Under Shirt	Skin toned, white or black long-sleeved under shirt.	Full school uniform to be worn over top.
Bottoms		
Skirt	Green pleated skirt.	Hem to sit at the top of the knee. Worn on the waist.
Shorts	Formal grey shorts.	Hem to sit at the top of the knee. Worn with belt.
Trousers	Formal grey trousers.	Hem to sit at or just below ankle. Worn with belt.
Socks & Footwear		
White Socks	Short white socks (ankle to crew length). Plain or KGSC branded.	To be worn with skirt. Socks must be visible above the shoe.
Grey Socks (Crew or Long)	Grey, striped with green and red at top.	To be worn with shorts and trousers. Long socks are appropriately turned over and self-supporting.
Stockings/Tights	Skin toned or black stockings/tights.	To be plain and in good condition. Worn under skirt.
Shoes	Polishable, full black, lace up shoes of plain design.	To be in good order and polished. Worn with Formal uniform only.
Outerwear		
Jumper	V-neck green knit jumper with College emblem on front.	Worn with Formal and Sports uniforms.
Jacket	Zip-up dark green jacket, two pockets and College emblem on front.	To remain in good condition. Worn with Formal and Sports uniforms.
Blazer	Green blazer with College emblem on front.	To be worn with Formal uniform only.
Senior Jersey (Year 12 only)	Red, white and green long sleeve 'rugby' style jersey.	Full uniform to be worn underneath. Worn with Formal and Sports uniforms.
Accessories		
Tie	Green and red striped tie	Knot positioned over top button.
Belt	Black non-woven belt with plain buckle.	Worn with shorts and trousers.
Cap (optional)	Green cap with College emblem embroidered on front.	Worn with Formal and Sports uniforms.
Scarf	Black knitted scarf with KGSC at the bottom.	Worn with Formal and Sports uniforms.
Hair Ribbon (optional)	School or house colours only.	Worn over neutral coloured hair ties.
Cultural Head Covering	Plain black, white, or skin toned material.	Worn in accordance with cultural practices.

7.2 Senior School Uniform Examples



White Blouse & Shorts



Grey Blouse & Shorts



White or Grey Shirt & Shorts



White Blouse & Skirt



Grey Blouse & Skirt



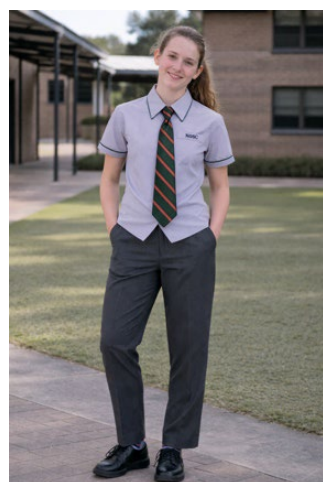
White Shirt & Skirt



Grey Shirt & Skirt



White Blouse & Trousers



Grey Blouse & Trousers



White Shirt & Trousers



Grey Shirt & Trousers

8 Sports & Sports Excellence Uniform

8.1 Uniform Items

Item	Description	How to Wear
Tops		
Polo Shirt	Green collared polo shirt with white and red details and KGSC logo.	Polo shirt is worn untucked
Sports Excellence Polo Shirt	Polo shirt with Sports Excellence program branding.	Refer to the <i>Excellence Program Agreement</i> .
Long-sleeved Under Shirt	Skin toned, white or black long-sleeved under shirt.	Full school uniform to be worn over top.
Bottoms		
Sports Shorts	Green 'basketball' style sports shorts.	Hem to sit at the top of the knee.
Sports Excellence Shorts	Sports shorts with Sports Excellence program branding.	Refer to the <i>Excellence Program Agreement</i> .
Trackpants	Green microfibre trackpants with red and white stripe on side.	Hem to sit at or just below ankle. Worn on the waist
Socks & Footwear		
White Socks	Short white socks (ankle to crew length). Plain or KGSC branded.	To be worn with shorts and trackpants. Socks must be visible above the shoe.
Stockings/Tights	Skin toned or black stockings/tights.	To be plain and in good condition. Worn under sports shorts.
Sports Shoes	Athletic sports joggers with laces and non-marking sole. Any colour.	To be clean and in good order. Worn with Sports uniform only.
Outerwear		
Jumper	V-neck green knit jumper with KGSC logo on front.	Worn with Formal and Sports uniforms.
Jacket	Zip-up dark green jacket, two pockets and KGSC logo on front.	To remain in good condition. Worn with Formal and Sports uniforms.
Senior Jersey (Year 12 only)	Red, white and green long sleeve 'rugby' style jersey.	Full uniform to be worn underneath. Worn with Formal and Sports uniforms.
Accessories		
Bucket Hat (compulsory Year 6-7, optional Year 8-12)	Reversible green bucket hat with house colours. College emblem embroidered on front.	Worn with Formal and Sports uniforms. Colour to align with student's house.
Cap (Year 8+ only)	Green cap with College emblem embroidered on front.	Worn with Formal and Sports uniforms.
Sports Excellence Cap	Cap with Sports Excellence program branding.	Worn with Formal and Sports uniforms. Refer to the <i>Excellence Program Agreement</i> .
Scarf	Black knitted scarf with KGSC at the bottom.	Worn with Formal and Sports uniforms.
Hair Ribbon (optional)	School or house colours only.	Worn over neutral coloured hair ties.
Cultural Head Covering	Plain black, white, or skin toned material.	Worn in accordance with cultural practices.

Sports Excellence students are exempt from purchasing the standard Sports uniform items, as the Excellence uniform fulfills this requirement. For further details on the Sports Excellence uniform, refer to page 3 and the *Excellence Program Agreement*.

8.2 Middle & Senior School Sports Uniform Examples



Polo Shirt & Sports Shorts



Sports Polo Shirt & Trackpants



Jacket & Sports Shorts